

**FAMILY**



- <https://www.youtube.com/watch?v=plW3U7DPJGE&t=75s>



# Family

How do you define family?

1. What do you want your family to be in the future and why?
2. What makes you thankful the most with your family now?
3. What do you hate the most from your family?
4. What is the most remarkable memory that you have ever experienced with your family?
5. What is the value that your family holds/ what do your parents always suggest you to do?



Listen to the following recoding and choose who is being mentioned by Greg 

- Aunt
- Grandparents
- Uncle
- Grandchildren
- Sister
- Granddaughter
- Brother
- Grandson
- Grandmother
- Cousin
- Grandfather
- Parents





# Put the life events in the correct order on the timeline

1. Got married
2. Grandfather was born
3. Grandmother finished work
4. Photographer took the picture
5. Went to the university
6. Grandmother was born

 1937

 1939

 1958

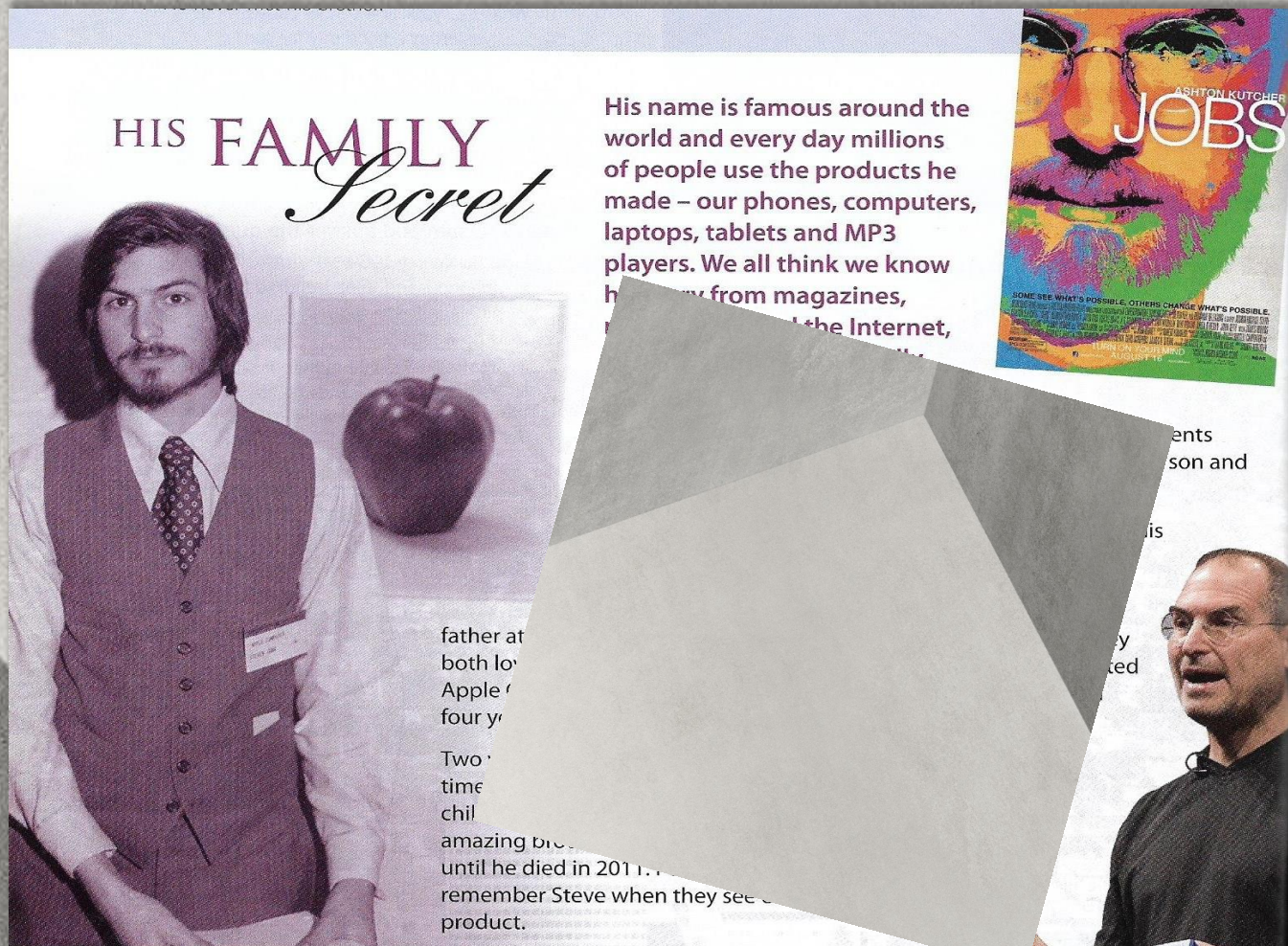
 1962

 1963

 2004



# Discussion: HIS FAMILY SECRET



**HIS FAMILY**  
*Secret*

His name is famous around the world and every day millions of people use the products he made – our phones, computers, laptops, tablets and MP3 players. We all think we know him from magazines, the Internet,

father at both lo Apple four y

Two time chil amazing bro until he died in 2011. remember Steve when they see product.

ents son and

is

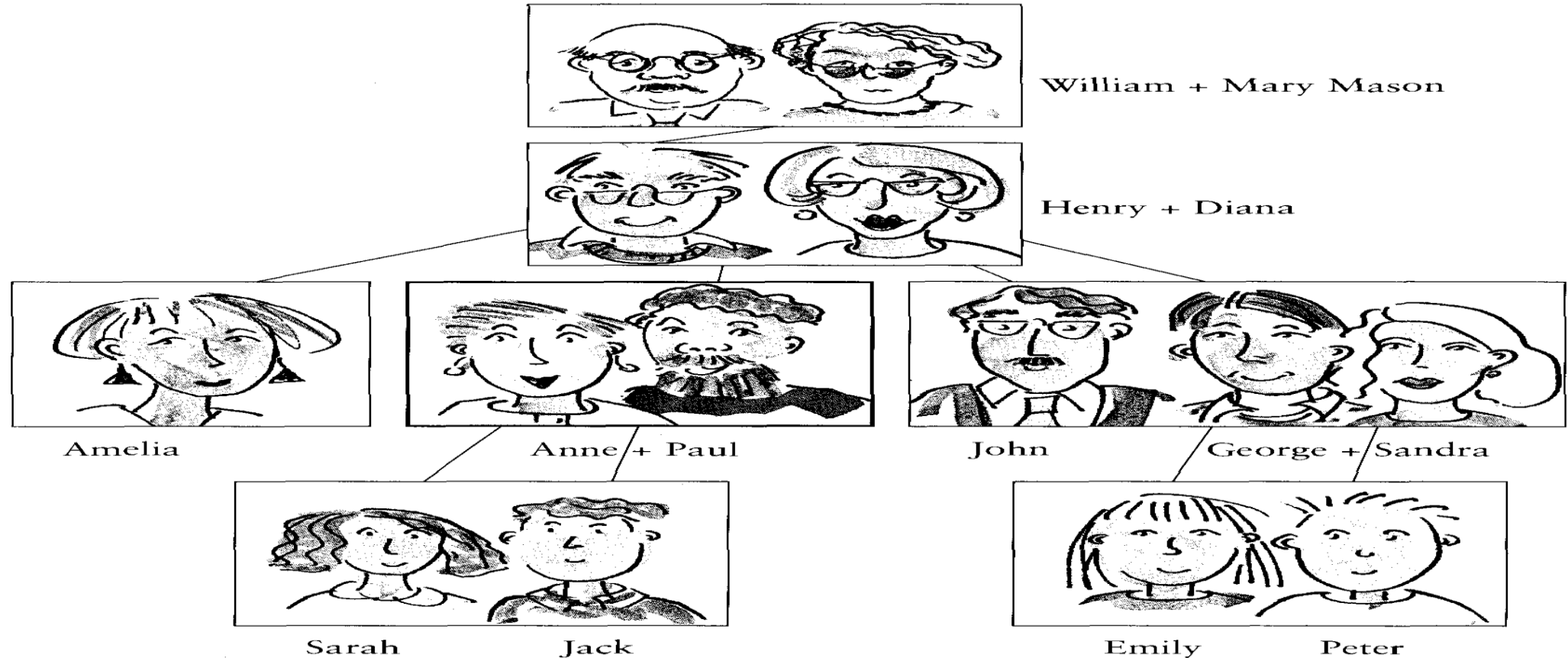
y ted

- What do you know about his company?
- What do you think the secret might be?
  - a. His grandfather married four times
  - b. He had a secret sister
  - c. His father was a famous actor
  - d. He never met his brother



# Family Tree

A family tree for some of Anne and Paul Mason's relatives or relations.





- Paul is \_\_\_\_\_'s husband and \_\_\_\_\_ and \_\_\_\_\_'s Father
- Sarah is \_\_\_\_\_'s sister.
- \_\_\_\_\_ is Sarah and Jack's Grandfather. Diana is their \_\_\_\_\_
- John and George are Sarah and Jack's \_\_\_\_\_
- Sarah is \_\_\_\_\_niece. Jack is their \_\_\_\_\_
- Emily and Peter are Sarah and Jack's \_\_\_\_\_.



Make your own family tree and present!



# Grammar Focus

+	-
<p><b>S + V2 + O</b> <i>I studied last night</i></p>	<p><b>S + did not + V inf + O</b> <i>I did not watch TV last two days</i></p>
<p><b>S + to be (was/ were) + O (n, adj, adv)</b> <i>Sandra and I were at Bandung two days ago</i></p>	<p><b>S + to be + not +O</b> <i>We were not tired at all</i></p>



# Simple Past Tense

(a) It *snowed*\* yesterday.

(b) Tom *watched* TV last night.

*At one particular time in the past, this happened. It began and ended in the past. Most simple past verbs add -ed, as in (a) and (b).*

(c) Jack *went* to work early.

(d) I *came* to work late.

(e) We *saw* a great movie last night.

Some verbs have irregular past tense forms, as in (c), (d), and (e).

NOTE: See Appendix Chart E-9 for a list of irregular verb forms.

(f) Emily *was* at the office this morning.

(g) You *were* tired yesterday.

The simple past forms of *be* are *was* and *were*, as in (f) and (g).

(h) Andrew *caught* the ball, *ran* down the field, and *scored* a point.



Note that in a series of actions, the verbs are the same tense, as in (h).

*INCORRECT:* Andrew caught the ball, ~~is running~~ down the field, and ~~score~~ a point.



# Regular and Irregular Verb

Regular Verb Forms		
AFFIRMATIVE	NEGATIVE	QUESTION
I You He, She, It We They <span style="font-size: 2em; vertical-align: middle;">}</span> <i>helped.</i>	I You He, She, It We They <span style="font-size: 2em; vertical-align: middle;">}</span> <i>did not help.</i>	<i>Did</i> I <i>Did</i> you <i>Did</i> he, she, it <i>Did</i> we <i>Did</i> they <span style="font-size: 2em; vertical-align: middle;">}</span> <i>help?</i>
Irregular Verb Forms		
AFFIRMATIVE	NEGATIVE	QUESTION
I You He, She, It We They <span style="font-size: 2em; vertical-align: middle;">}</span> <i>ate.</i>	I You He, She, It We They <span style="font-size: 2em; vertical-align: middle;">}</span> <i>did not eat.</i>	<i>Did</i> I <i>Did</i> you <i>Did</i> he, she, it <i>Did</i> we <i>Did</i> they <span style="font-size: 2em; vertical-align: middle;">}</span> <i>eat?</i>



# Be Form

## Be Verb Forms

AFFIRMATIVE			NEGATIVE			QUESTION		
I, He, She, It	<i>was</i>	here.	I, He, She, It	<i>was not</i>	here.	<i>Was</i>	I, he, she, it	here?
You, We, They	<i>were</i>	here.	You, We, They	<i>were not</i>	here.	<i>Were</i>	you, we, they	here?